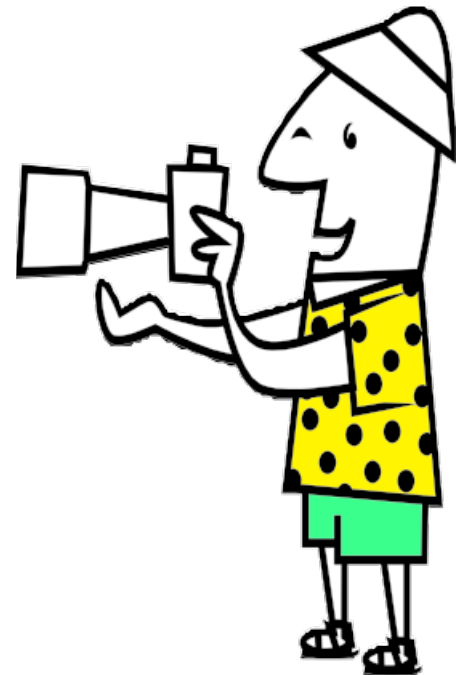


Sequatchie Co. 4-H Photo Contest

Rules

- You can enter a single photo in any one or all the following areas:
 - Person or people
 - Landscapes
 - Animal or animals
 - Building or buildings
- Photos size 3"X5" or 4"X6"
- Color or black & white may be entered.
- The student **MUST** make photos.
- Mount photos on 5"X7" note card.
- Your name, your phone #, teachers name and grade must be on the Back of each photo
- NO captions. (No writing on the front)
- Photos will be judged on quality.



Contact UT Extension Sequatchie County
170 Church Street Dunlap, TN
423-949-2611

Facebook: www.facebook.com/UTExtension.Sequatchie

Web: <http://sequatchie.tennessee.edu>